

ENRICH ENHANCE INSPIRE

# LOUISA ARTS

# CENTER

SPRING-SUMMER 2022 PLAYBILL

# TABLE OF CONTENTS

page **2** LAC Board & Staff

page **3** Exhibitions in the  
Purcell Gallery

pages **4-15** Performances in the  
Cooke-Haley Theater

page **16** Past Exhibits &  
Performances

page **17** Events on the Patio

page **18** Art Classes for Youth  
& Adults

page **19** Get Involved

pages **20-22** Season Sponsors,  
Fundors & Partners

page **23-25** Advertisements

page **26-29** Donor List

# BOARD & STAFF



Hello and welcome to our Spring into Summer playbill.

One of the upsides of the pandemic having forced us to postpone and reschedule some of our events, has been the extension of our regular performing season from only Fall and Spring into a full year!

Inside this playbill you will find details of the wonderful exhibitions we have planned for the Purcell Gallery; all of the performances in the Cooke-Haley Theatre and on the Fairgrounds; Art classes for all ages; Music & Wine on our terrace, and others ways you can get involved with your Arts Center.

This is also our opportunity to acknowledge and thank our sponsors and donors, without whom we would not be able to bring these fantastic events!

So, we are delighted to bring a variety of fabulous shows in our Cooke-Haley Theatre and wonderful art exhibitions in our Purcell Gallery for your enjoyment!

## OFFICERS

Stephanie Koren,  
*President*

Greg Schumacher,  
*Vice President*

Julia Skare,  
*Treasurer*

Jennifer Purcell,  
*Secretary*

Steven R. Smith,  
*Governance*

Jo Griffith,  
*Grants*

## DIRECTORS

Pat Hanley

LaVahn Hoh

Odette Holmes

William B. Guilford, Jr.

## HONORARY DIRECTORS

Bud Dulaney

Dr Jane Pendleton  
Wootton

Hal Purcell

Pat Purcell

Charles Rosson

Rob See

Pamela Stone

## STAFF

Karen Welch,  
*Executive Director*

Ann Wren,  
*Finance Manager*

Gina Harris,  
*Events Manager*

Nicole Copeland,  
*Box Office Manager*

Jenny Christian,  
*Art Programming  
Manager*

Patricia Fleshman,  
*Marketing & Fundraising  
Manager*

Julia O'Reilly,  
*Marketing Associate*

# EXHIBITIONS

## *in the Purcell Gallery*



### **DOORS, GATES, & WINDOWS** **January 28 – March 18**

Our second Call for Entry show of the season will be curated by David Robatin. David explains his art work by saying, 'I use mostly acrylics on art boards and canvas, and continue pushing the boundaries within my specific style. I have been influenced by everything from chiaroscuro to color field, from Dali to Rothko.'



### **DIFFERENT STROKES** **March 25 – May 20**

This joint exhibit features artists Ron Campbell and Ruth Lefko. Campbell uses the country as inspiration for his work and says 'There are scenes worthy of canvas at every turn in the road, and I am doing my best to capture all of them.' Lefko's style ranges from realism to abstract, and viewers can witness the joy she finds in the beauty around her, and in expressing life experiences through her art.



### **IN SPACE AND TIME** **June 10 – July 15**

This show will be curated by Betsy Moore who is an artist in residence at Crossroads Art Center in Richmond, Ms. Moore enjoys a lifelong love affair with color, line and design. She generally works in oils and prefers a looser brush style. She paints to bring light and expression into her art.



### **FXBG PHOTOGRAPHY CLUB** **July 29 – September 16**

For over 35 years, the Fredericksburg Photography Club has brought together amateur and professional photographers in the Fredericksburg area. The Club fosters a love of photography and helps to improve the members' works. This show will be curated by Louisa photographer/artist Alison Thomas who was recently featured in the Purcell Gallery.



# PERFORMANCES

*In the Cooke-Haley Theatre and  
Louisa Fairgrounds*



## VOICES OF SERVICE

February 19, 2022 | 7:30pm | \$31

Voices of Service (VOS) is a quartet of veterans and active-duty service members representing the diversity and excellence that exists within our military communities.

As national favorites, they made it to the semi-finals of American's Got Talent! VOS is also affiliated with the Center for American Military Music Opportunities (CAMMO), which focuses on creating music performance and career opportunities for veterans and active service members.

Join us for an evening in support of VOS!

This event has been made possible by our generous sponsor,  
Lake Anna Tractor & Hardware.



## THE IVY LEAGUE OF COMEDY

February 26, 2022 | 7:30pm | \$26

Join us for an evening of comedy featuring Jon Fisch, Ophire Eisenberg, and the host for the evening, Shaun Eli! : Jon has appeared on the Late Show with Stephen Colbert, and David Letterman. Shortly after moving to NYC he was chosen as one of Comedy Central's Fresh Faces of Comedy. Comedian Ophira Eisenberg has performed on The Late Late Show with Craig Ferguson, Comedy Central, The Today Show, and more! Stand-up comedian Shaun Eli has rightfully been called one of America's smartest comics. He has headlined comedy shows on five continents. For just about anything he has experienced, Shaun has a hilarious story at the ready.

This event has been made possible by our generous sponsor,  
Builders FirstSource.



## **THE RAINIER TRIO**

*MARCH 6, 2022 | 4:00pm | \$11*

The Rainier Trio is an exciting and energetic group that captivates audiences with gems from the violin-viola-piano trio repertoire. During this evening performance of "A Night at the Movies" you can expect to hear soundtrack favorites from Fiddler on the Roof, Star Wars, Harry Potter and more!

This event has been made possible by our generous sponsors,  
PJ and Julia Skare, and Builders FirstSource.





## **SKYSTONE BLUEGRASS BAND**

*March 12, 2022 | \$12*

Skystone Bluegrass Band hails from Louisa, VA and plays a unique blend of bluegrass music, popular country ballads, and a variety of bluegrass gospel songs. Audiences will be thrilled to hear three and four-part harmony vocals, along with fast flying instrumentals!

This event has been made possible by our generous sponsors,  
Builders FirstSource.



## **THE BOBBY BLACKHAT BAND**

*March 20, 2022 | 4:00pm | \$11*

Bobby "BlackHat" Walters, recording artist, harmonica player, vocalist, songwriter, and actor hails from Cleveland, Ohio and has been playing music for over 40 years. Bobby is a retired U.S. Coast Guard Commander with 27 years of distinguished service, which included serving as Military Aide to the President, and being awarded the Coast Guard Medal for Heroism. Bobby Blackhat brings together the finest blues musicians in Hampton Roads to perform classic, modern, and original blues tunes that will keep your toes tappin' and hips shakin' all night long!

This event has been made possible by our generous sponsor,  
Builders FirstSource.

# NOT FADE AWAY

ROCK 'N' ROLL  
REIGNITED



## NOT FADE AWAY

April 2, 2022 | 7:30pm | \$31

This is rock 'n' roll like you've never heard (or seen) before! This young group has been taking the country by storm with their amped-up renditions of classic hit songs from legends like Buddy Holly, Elvis Presley, The Beatles, Jerry Lee Lewis, and more. These guys (and gal) will have you singing and dancing along, and leaving you completely blown away. This is not your typical tribute band...This is Rock 'n' Roll Reignited!

This performance is made possible by our generous sponsor,  
William 'Billy' Guilford, Jr., and Nick and Sarah Pardoe.



## THE BOLD, THE YOUNG & THE MURDERED

*April 22, 2022 | 7:30pm | \$11- \$21*

*April 23, 2022 | 7:30pm | \$11- \$21*

*April 24, 2022 | 2:00pm | \$11- \$21*

This comedic murder-mystery follows the long-running soap opera cast of *The Bold and The Young* in its last days: the hunky hero has self-esteem issues, its villainous old man is more interested in soup, and its heroines are slightly psychopathic.

The Executive Producer gives the squabbling cast an ultimatum: Complete one episode overnight or the show dies. But when the director ends up murdered, and other cast members start dropping like flies, it seems like his threat might actually come true. Can these misfits discover the murderer before the show is literally killed off?

Produced by special arrangement with Playscripts, Inc. ([www.playscripts.com](http://www.playscripts.com))

This event has been made possible by our generous sponsors the William A. Cooke Foundation, Charlottesville Area Community Foundation, StrangeHouse SkateShop: Frank & MargaretAnne Molina, and Friends of the Arts Center.





## TONY DESARE

April 30, 2022 | 7:30pm | \$21

Tony DeSare performs with infectious joy, wry playfulness, and robust musicality. Named a Rising Star Male Vocalist in Downbeat magazine, DeSare has lived up to this distinction by winning critical and popular acclaim for his concert performances throughout North America and abroad. From jazz clubs, Carnegie Hall, and then Las Vegas headlining with Don Rickles and major symphony orchestras, DeSare has brought his fresh take on old school class around the globe.

This event has been made possible by our generous sponsors, John Jerl and Pat Purcell, and Builders FirstSource.





## **TAYLA LYNN AND TRE TWITTY**

May 7, 2022 | 7:30pm | \$26

Join us for this salute to legendary musicians, Loretta Lynn and Conway Twitty, as their grandchildren Tayla Lynn and Tre Twitty perform their most famous country hits!

Tre Twitty brings a performance that is country at its heart! One thing in this big wide world is for sure, musical talent runs deep in the Twitty family's blood. It's no surprise Tayla Lynn has followed in her grandmother's footsteps with a successful career as a singer and songwriter, as she was born into a country music dynasty!

This event has been made possible by our generous sponsors,  
Builders FirstSource.



## **SKIP CASTRO BAND** **AT THE LOUISA FAIRGROUNDS**

*June 18, 2022 | 7:30pm | \$26*

It began a long time ago....1978 to be exact. Four musicians, out of work at the same time, got together because honestly, they liked to play music. Thus, the Skip Castro Band was born. A mutual love of rhythm 'n blues, swing, boogie woogie and rock 'n roll became the foundation for their music.

Fast forward 40 years and the same four guys are still playing together. Why? Because even though they stopped playing full-time 30 years ago, there's a unique groove and spirit that exists when the Skip Castro Band plays. They've played with other musicians, but the greatest satisfaction comes when these four get together!

This event has been made possible by our generous sponsors,  
Jenn and Eric Purcell.



## SHAKESPEARE IN JULY

*Macbeth* | July 9, 2022

*Midsummer Night's Dream* | July 16, 2022

\$20

Starling Shakespeare Company's work amplifies the playfulness and honesty in Shakespeare's plays.

Today, despite all our tools and luxury, how often do we fail to make time to revel in joy, play, or creativity? Starling aims to close the gap between the creative energy of the Renaissance and today. Experience tragedy as set out in *Macbeth*, or the workings of love staged in *A Midsummer Night's Dream*. Savor Shakespeare's explosive creativity and never-before-imagined ideas through the voice of the Starling Shakespeare Company.

This event has been made possible by our generous sponsors,  
Dave and Danni Richards.





## **SUZY BOGGUS**

**AT THE LOUISA FAIRGROUNDS**

*August 20, 2022 | 7:30pm | \$42*

Multi award-winning artist, Suzy Bogguss, is an American country music singer and songwriter. Six of her songs were top-ten hits, three of her albums achieved gold status, and one achieved platinum. Suzy also took home "Top New Female Vocalist" from the Academy of Country Music Awards. Audiences will be sure to enjoy this performance from one of the most diverse females in the country music industry!

This event has been made possible by our generous sponsors, Jim and Deborah Herndon, and Builders FirstSource.

# PAST EXHIBITS & PERFORMANCES

in the Purcell Gallery and Cooke Haley-Theater



**Dream a Little Dream**  
Sep 24 - Nov 19, 2021



**Celebrating Young Artists**  
Dec 3 - Jan 21, 2021



**Shakespeare's Romeo and Juliet**  
Jul 30, 2021 | \$20



**The Original Rhondels**  
Aug 7, 2021 | \$15



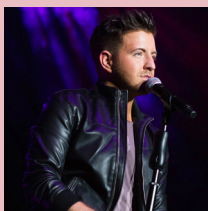
**Piano Man: Generations**  
Sep 11, 2021 | \$26



**The Jersey Tenors**  
Oct 2, 2021 | \$100



**Seldom Scene**  
Oct 23, 2021 | \$39



**Billy Gilman**  
Nov 6, 2021 | \$31



**The Sharpe Family Singers**  
Dec 18, 2021 | \$36

# Music and Wine



**Chris Hanks**  
June 10, 2022



**"Big Bob" Ralston**  
June 24, 2022



**Dan Troll**  
July 8, 2022



**"California Bob" Hale**  
July 22, 2022



**Jimmy Overton**  
August 12, 2022



**Chris Hanks**  
August 26, 2022

## MUSIC & WINE FREE ON THE LAC TERRACE

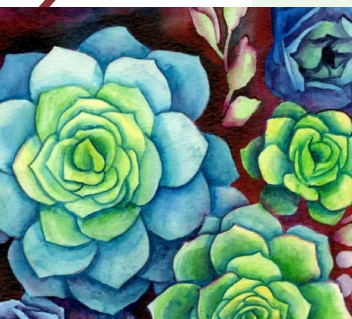
*Every 2nd & 4th Fridays, June through August*

Enjoy this free outdoor event on our beautiful terrace, as we provide fabulous entertainment from local musicians featuring Chris Hanks, Big Rob Ralston, and Dan Troll. Our Music and Wine series takes place on the second and fourth Friday of the summer months from 6:00pm – 8:00pm. Beer, wine, and soft drinks are available for purchase, and we encourage our attendees to order carry-out from one of Louisa's popular restaurants. Bring your lawn chairs, a picnic basket, and be ready for a fun-filled evening perfect for the entire family!

This event has been made possible by our generous sponsors, RJ Wren Heating & Cooling, Harris Electric Company, Laughlin Realty, and Karen and Darren Welch.



# Spring Art Classes, Youth & Adult!



## SUCCULENTS SERIES

Classes in March and April, 2022



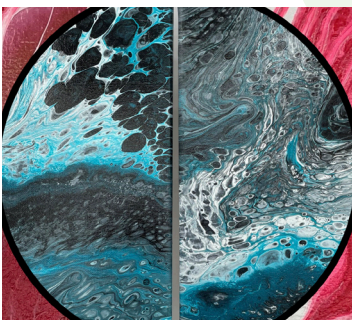
## GIRL IN A GREEN HAT

March 12, 2022



## NEEDLE FELTING: SHEEP

March 19, 2022



## PAINT POURING

April 30, 2022



## MOTHER'S DAY TREAT

May 7, 2022



## MAGICAL FOREST BOOK NOOK

May 21, 2022

## MORE SPRING AND SUMMER ART CLASSES TO FOLLOW!

From early March to the end of May, we offer art classes for both our youth and adults. Enjoy choosing from a variety of options: whether paint, needle felting, precious metal clay—you name it! We have just the thing for you and yours!

Don't forget to check in on our webpage [louisarts.org](http://louisarts.org) for more spring and summer arts classes to follow!

# STAY INVOLVED ALL YEAR

There are many ways to get involved with the Louisa Arts Center all year round! Participate in an art class, sign children up for an after-school program or summer camp, view an exhibit in our gallery, attend our free Music and Wine events outdoors on our terrace or volunteer to work with the Mobile Arts Outreach Program and the Louisa County Public Schools to bring art programming and free meals to underserved youth and seniors in our community this summer! For more information, visit our website at [www.louisaarts.org](http://www.louisaarts.org) or call our Box Office at 540-967-5200!





SPONSORS GIVE TRIBUTE TO  
**LAVAHN & MARY FRANCES HOH**  
**SCHOLARSHIP FUND**



Thank you LaVahn and MF Hoh for the many years  
of love and support you have given to the  
Louisa Arts Center!

**SPONSORS ELLY & BILL TUCKER**

Scholarships are made available by the generous support of the LaVahn & Mary Frances Hoh Scholarship Fund. This fund ensures every child has the opportunity to attend any of our youth programs and events with their friends. If you know of any child who wishes to attend a program or event at LAC, click on the scholarship logo below, complete the application form, print out and send to **[executivedirector@LouisaArts.org](mailto:executivedirector@LouisaArts.org)**.

# SEASON SPONSORS, FUNDERS & PARTNERS

The Louisa Arts Center thanks the following businesses and organizations for their generous support of our 2020-2021, and 2021-2022 Performing Arts Season.



# SEASON SPONSORS, FUNDERS & PARTNERS



**Rappahannock  
Electric Cooperative**

A Touchstone Energy® Cooperative 



CHARLOTTEVILLE AREA  
**COMMUNITY  
FOUNDATION**

INVEST FOR GOOD



**THE LAVAHN &  
MARY FRANCES HOH  
SCHOLARSHIP FUND**



**Dominion  
Energy®**

*The Rea Charitable Trust*





## ANALYTICAL MANAGEMENT SOLUTIONS

Since 1994 - Construction Consulting - Scheduling - Claims  
Analysis - Dispute Resolution - Mediation & Arbitration Specialists

**Proud Supporter of  
Louisa Arts Center**

Main Office: 5900 Windward Parkway, Suite 510  
Alpharetta, Georgia 30005  
(770) 751-9200  
211 West Main St.  
PO Box 207  
Louisa, VA 23093  
(540) 894-7296

[www.amssolutions.com](http://www.amssolutions.com)

## JWS Engineering Team, LLC Land Development Advocate

Julia W. Skare, PE, MBA  
SWaM Certified, Micro-business  
434-390-8956  
[JuliaSkare@gmail.com](mailto:JuliaSkare@gmail.com)

Grading and Erosion & Sediment Control  
Site Development and Zoning  
Owners Representative

## SPONSOR AN EVENT!

Visit [louisaarts.org](http://louisaarts.org)



## The GRAPHIC GARAGE

*Full Service*  
**SIGN &  
AWNING**  
*Company*

[info@tggsigns.com](mailto:info@tggsigns.com)

77 Zion Park Ct - Troy, VA

**434-589-3432**

[tggsigns.com](http://tggsigns.com)

Facebook - The Graphic Garage

## IMAGE IS EVERYTHING

• BANNERS •  
VEHICLES • WRAPS  
DECALS • WINDOWS  
• LED DISPLAYS •  
T-SHIRTS • HATS



## Building Better Communities

Clark Construction is proud to support the communities in which we live and work. Best wishes to the Louisa Arts Center for another successful performance season.

**CLARK**  
CONSTRUCTION



# FLOOZIES

PIE • SHOP

Café

*Come Get A Piece!*

Open For Breakfast:

Tues-Fri 8am-11am

Sat 8am-3pm

Open For Lunch:

Tues-Fri 11am-4pm

Sat 11am-3pm

Pie & Coffee Only:

Saturday 3pm-4pm

Want to join us? Ask about  
Volunteering your time and  
talents with the Louisa Arts  
Center, TODAY!



# Obrigado

**LUNCH: MONDAY - FRIDAY**

11:00 AM - 3:00 PM

**DINNER: TUESDAY - SATURDAY**

5:00 PM - 9:00 PM

**SUNDAY BRUNCH**

10:30 AM - 2:00 PM

**SUNDAY SUPPER**

5:00 PM - 8:00 PM

[www.obrigadorerestaurant.com](http://www.obrigadorerestaurant.com)

(540) 967-9447



The **LATEST** and **BEST**  
in outdoor power  
equipment and services  
in **CENTRAL VIRGINIA**

*Pick Up and Delivery  
Service for  
Tractors and Mowers*

**Full Line of Hardware Including:**

- Plumbing
- Electrical
- Paint (Valspar) and Accessories
- Hand Tools

**AND MORE!**

**WE CARRY**

- Kioti
- Echo
- Scag
- Woods

**WE SERVICE**

All Outdoor Power  
Equipment

540-894-8770 | 4541 Chopping Rd, Mineral, VA

[www.lakeannatractor.com](http://www.lakeannatractor.com)

# **HEC** *Harris Electric Company*

---

*Established 1956*  
**VA CLASS A CONTRACTOR**



Karen & Darren Welch



Temperatures are dropping  
It's Tune Up Time!



*Serving Our Community Since 1998*

RJWRENHEATINGANDCOOLING.COM

RJWREN@YAHOO.COM

O-703 369-3318 C-703 929-3034

# DONOR LIST

## LUMINARY (\$10K+)

Builders FirstSource

Charlottesville Area  
Community Foundation

Community Emergency  
Response Fund

County of Louisa

Friends of the Arts Center

The Point

Rea Charitable Trust

Pierce and Pamela Stone

Town of Louisa

Virginia Commission for the  
Arts and National  
Endowment for the Arts

## VISIONARY (\$5K-\$9,999)

Clark Construction Group,  
LLC, and Dave Golden

Coastal Insulation and  
Fireplaces, LLC, and Todd  
and Odette Holmes

William A. Cooke Foundation

Bill Dean and MC Dean, Inc.

Dominion Energy

Jim and Deborah Herndon

Lake Anna Tractor and  
Hardware and Jon and  
Stephanie Koren

PGA Tour Charities, Inc.

Charles and Janet Purcell

Eric and Jennifer Purcell

John and Pat Purcell

Robinson, Farmer, Cox and  
Associates

Greg and Jill Schumacher

Rob and Doris See

Steven Smith and Deborah  
Baggett

## STAR (\$2,500 - \$4,999)

Don and Sarah Enloe

Andre and Bonnie Lambert

Louisa County Rotary  
Foundation

Mark and Pamela Luttner

Sam and Barbara Mahaffey

Peter and Mary O'Konski

Pepsi-Cola Bottling  
Company of Central Virginia

Janet Purcell in honor of Luke  
Purcell

John Purcell Jr

Susan Ross and Clark  
Construction Group, LLC

Wells Fargo Foundation

GeMROI Company and  
Hunter Morin

## EXECUTIVE PRODUCER (\$1,500 - \$2,499)

Herbert and Donya Bauer

David and Melinda Black

Russell and Dianne S. Bone

Dominion Energy Foundation

Pat Edwards

First Baptist Church

Breese Glennon

Mary Lou B. Hopkins in  
memory of Richard L.  
Hopkins

JWS Engineering Team, LLC,  
and PJ and Jul Skare

LaVahn and Mary Frances  
Hoh Scholarship Fund

Kenneth and Pat Karhuse

Mike Keatley and MC Dean,  
Inc.

Mark and Dawn Laughlin

Out of the Box Catering, LLC

The Elm Foundation

## PRODUCER (\$1,000 - \$1,499)

Billy Brockman

Edge Concrete Company,  
LLC

Patricia and Julian Edwards

Hester Fletcher

Dr. William and Karen Grant

William B. Guilford, Jr.

Ned and Heidi Gumble

Harris Electric Company

Lake Region Repair, Inc.

Louisa County Chamber of  
Commerce

RJ Wren Heating and  
Cooling Company

Tom and Debbie Herdman

Arthur and Barbara McKenny

William and Elly Tucker

Claude and Lamar Owen

Betty B. Talley

David and Paula Richards

Margaret "Peggy" Sadler

Philip Sadler, Jr.

Christina Schoenster

## **DIRECTOR (\$500 - \$999)**

Aimee and Dawn Realty

Jean H. Bazzanella

Russell Bone

Ron Brassard

Jonathan and Jennifer  
Christian

Alan and Cindy Crummette

Pat and Carol Driscoll

Eric Anderson & ISEC

Fifty-Third Winery

Heaven's Way Cleaning  
Services, LLC

Stephen Harler

Jeff and Lori Iannazzo

KS Club

Lake Anna Business  
Partnership

Lake Anna Golf Carts, LLC

Tony Lovette

Ray and Karin Luck

Dorothy Macleod

Jack Matthews

Mid-Atlantic Watersports

North Anna Power Station  
Philanthropy Team

Frank and Joyce Osburn

Claude Owens in memory of  
Steve Smith

George Papantoniou

Rappahannock Electric  
Cooperative

David and Paula Richards

Duane E. Ryder and  
Susan R. Fletcher

Paul and Marie Snyder

Jim Spence

Spring Creek Community  
Club

Virginia Wine Merchants

## **ARTIST (\$250 - \$499)**

191 Smokey and Peter and  
Meagan DuBois

Carol Barfield

Joan Bennett

Joseph and Judy Brown

John and Virginia Carroll

Tracy Clark

James and Mary Jane  
Clarke

Camille Garrick

Ed and Dianne Gensinger

Joe and Gayla Goerge

Goodman Excavating, LLC

Jo Griffith

Charles Grutzius

John Hanna

Patrick and Judy Hanley

Deborah Herdman

J&D Concepts

Andrew Joyner

Brad and Donna Kirley

Margaret K. Leitner  
Louisa County Ruritian Club

Juanita Joan Matkins

Genny McIntire

Rick Palaco

Thorvald Peders, Jr., and  
Marian Gossin

Ted and Marion Peders

William Perkins

William and Joyce Osburn

Paulette Shockey

Silver Tie Gala Bartender Tips

Maren Smith

William Douglas Smith

Thalec, LLC

Brian Wilson

Steve Wilson

## **FRIEND (\$100 - \$249)**

Anonymous

Chip and Debby Best

John Blair

Anne Marie Blonkowski

George and Deborah Boyer

James and Jeanette Braga

Ron Bricker

The Reverend and Mrs.  
Rodney Caulkins

Ernestine Chaleki

Hilda R. Chiles

Liz Cleal

Victoria Collins

Eugene and Susan Corbett

Janice Creasy in honor of  
LaVahn and Mary Frances  
Hoh, Rob and Doris See, and  
Don and Win Smith



Kathy Davies	Brett and Vicki Mihalski	<b>FAN (\$50 - \$99)</b>
Darien Donahue	Bobby and Betty Moody	Yvonne Agee
Bud and Karen Dulaney	James Ogg	Thomas Altizer
Jeanean Duke	Al and Roseanne O’Konski	John Jr. and Deborah Blair
Thomas Estes	Jeffrey and Mary Palmer	Ernestine and Karen Chaleki
Ferrell’s Termite and Pest Control, Inc.	David Petrucci	David Cleal
Heidi Filter	James and Susanne Price	Janice King Crawford
Janice K. Fischer	Judy Powell	Jean DePiro
Joe and Corey Fischer	David Richards	Clifton and Christina Draper
Donna Frago	Margaret-Ann Rigsby	Laura Foussekis
Diane Gallagher	Janet S. Scott	Vincent and Jeanette Gorman
Jane Gallagher	William Shafer	Patricia Harper
Weslie E. Green Business Account	Denny Smith	Anna Jones
Harry and Connie Griffith	Doug and Maren Smith	Chris Kemp
Grove Street Fiduciary	Marie Snyder	David Koren
Charles Grutzius	Joseph and Jacquelyn Soto	Scott Leiffer
James and Lin Kogle	Kenneth and Nancy Stewart	Mr. & Mrs. Michael D. Long
Essie P. Knuckle	Carol Sudol	Eva Matalone
Mr. & Mrs. Leitme Roy Lassiter Jr.	Taxing Authority Consulting Services	Brent and Amy Meadows
Louisa County Historical Society	Paula and Regis Turocy	Heather Mechler-Fickes
Louisa True Value Hardware	Walter Williams	Nourish Louisa, LLC
Stuart and Coraline Lowry	Leila Winget-Hernandez	Rick and Eileen Parks
Dennis Luke	Betty Wold	Tom and Windy Payne
Genny McIntire		Barbara Peterson
GH and ET Marshall		Anita and Jerald Pilling
William and Christine Mathews		Robert Retrum
Maureen R. Mielenz		Arleigh Rice
		Michael and Susan Rigdon
		Ivar and Vyvyan Rundgren
		Mary Corita Ryan
		Janet Scott

Kathy Sullivan

Christine Sweeters

Janet Scott

Alison Thomas

Women's Club at Blue Ridge  
Shores

## **CONTRIBUTOR (\$1-\$49)**

Carla Alpern

Anonymous

Lorrain Barnett

John Beston

James Black

R. W. and Pat Carrier

Kathi Cline

Nicole Copeland

Claude Debusk

Emil Denk

Cortney Domasig

Patricia Fleshman

Elizabeth Garnett

Bonny Geris

John Harmon

Gayle Harper

Peggy Harper

Jeanine Howard

Anna Jones

Louisa County Farm Bureau

Ashley Lucckese

Tiffany Michael

Delaney C. Nave

Richard K Nehrboss

Mary Palmer

Jennifer Palmer

Sarah Peyton

Betty Phillips

James Porter

Nita Pryor

Karen Rexroth

Joe Rivera

Norman and Gwen Rose

Sue Ann Sarpy

Linda M. Sestito

James Sisk

Cynthia Wilson

Andrew Woolfolk

SEE IT BUILD IT LIVE IT

NEVER UNDERESTIMATE  
THE POWER OF BEING FIRST



---

**CHARLOTTESVILLE YARD**

1200 Stoney Ridge Rd. | Charlottesville, VA 22902 | 434.973.5356

**CULPEPER YARD**

13234 Airpark Dr. | Elkwood, VA 22718 | 540.825.0200

**FREDERICKSBURG YARD**

5213 Jefferson Davis Hwy. | Fredericksburg, VA 22408 | 540.834.2111

---



---

[www.bldr.com](http://www.bldr.com)